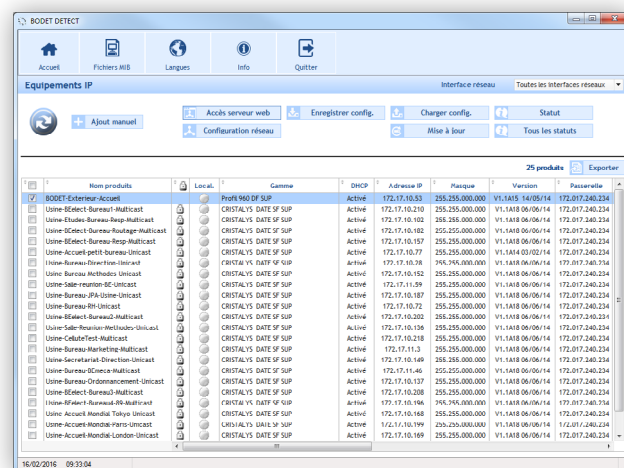


## DESCRIPTION

- BODET Detect is a configuration software of Bodet's equipment over a computer network.
- The configuration of the clocks is easily performed via the web server and its intuitive interface.
- Automatic network parameter setting via the DHCP protocol.

See product page on  
>> [www.bodet-time.com](http://www.bodet-time.com) <<



## USE

BODET Detect can inventory various types of Bodet's equipment present on a computer network, to save/load the configurations and update the FIRMWARE of the products.

All the parameters can be remotely set: lighting control, types of alarms, time zones...

Depending on the product and the model, this software allows you to configure the types of alarms to emit: synchronisation, clock hands position, shocks...

A large amount of information can be exported into an Excel file: product name, IP address, network mask...

## MAIN FUNCTIONS OF THE SOFTWARE

Manually add a product already present on the network by entering its IP address.

Set the network parameters of the product(s) (clocks, sounders, interfaces...).

Update the version of the product(s).

Create a file which summarises the alarms sent by the product(s).

Load a configuration in one clock or in a whole set of clocks.

## MAIN FUNCTIONS OF THE CLOCK EMBEDDED WEB SERVER

**Home:** summarizes the main data of a clock.

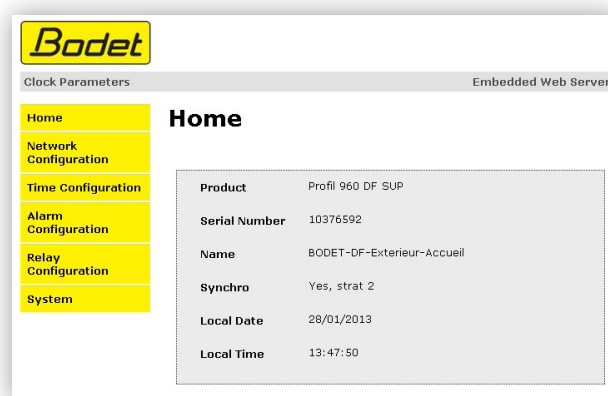
**Network configuration:** lets you configure a clock on the network.

**Time configuration:** lets you configure the time zone and the synchronisation mode.

**Alarm configuration:** lets you configure the IP addresses of the servers that will receive the error messages sent by the monitored clocks. It is possible to select the parameter(s) that will be specified as alarm(s) and to configure it (them).

**Relay configuration:** lets you specify the function of the configuration relay. The function can be alarm or lighting. With the lighting function it possible to remotely control the lighting of the clocks according to a schedule (Profil 960 only).

**System:** allows the modification of the system id and password, the restart of a clock and the reloading of the factory settings.



## AVAILABILITY

Available for download (free of charge) in our web site: [www.bodet-time.com](http://www.bodet-time.com)

